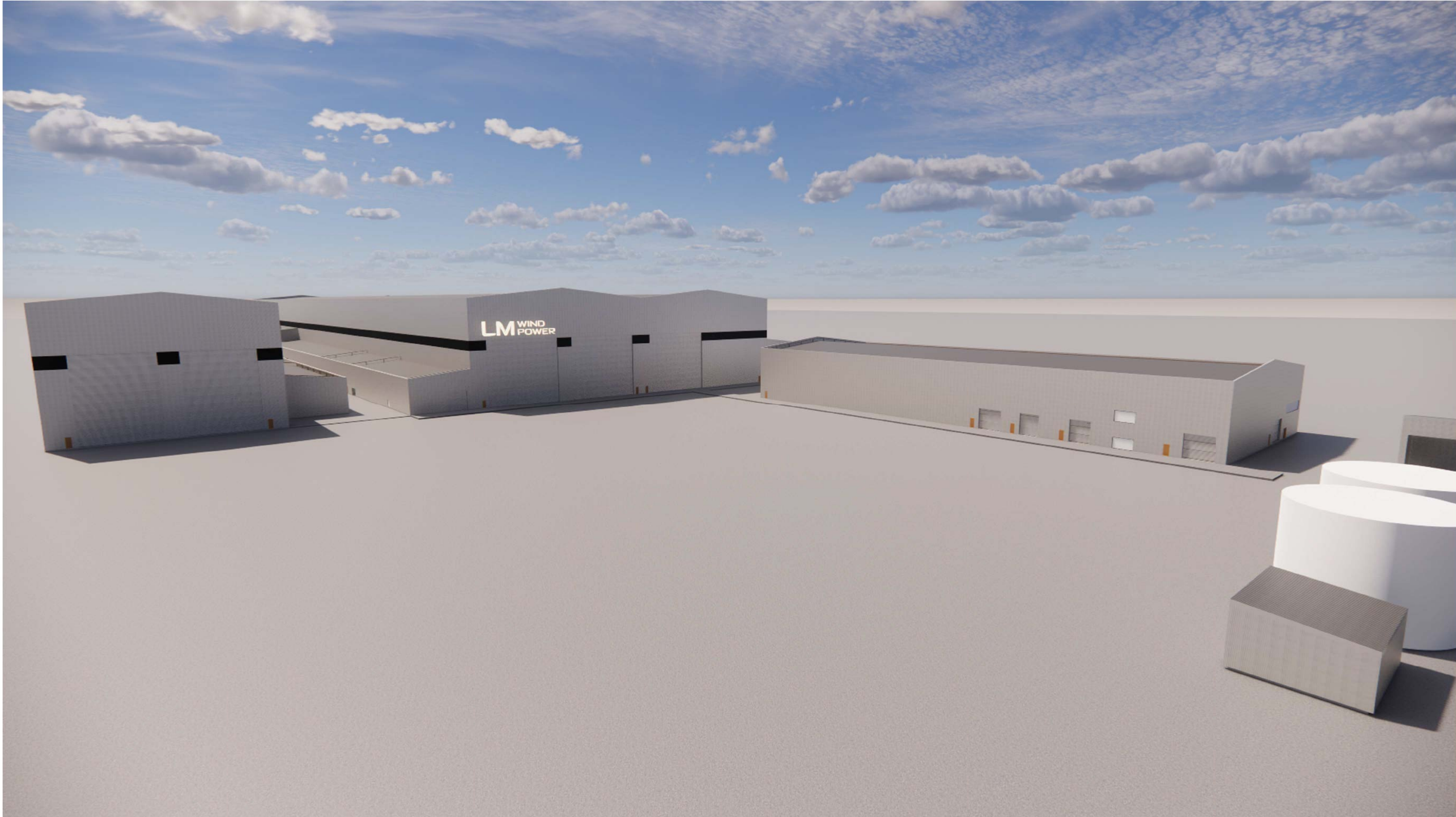


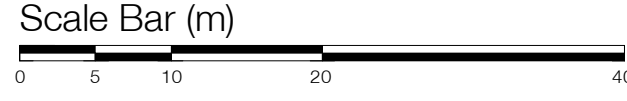


View from carpark looking towards the Office building and Blade Workshop

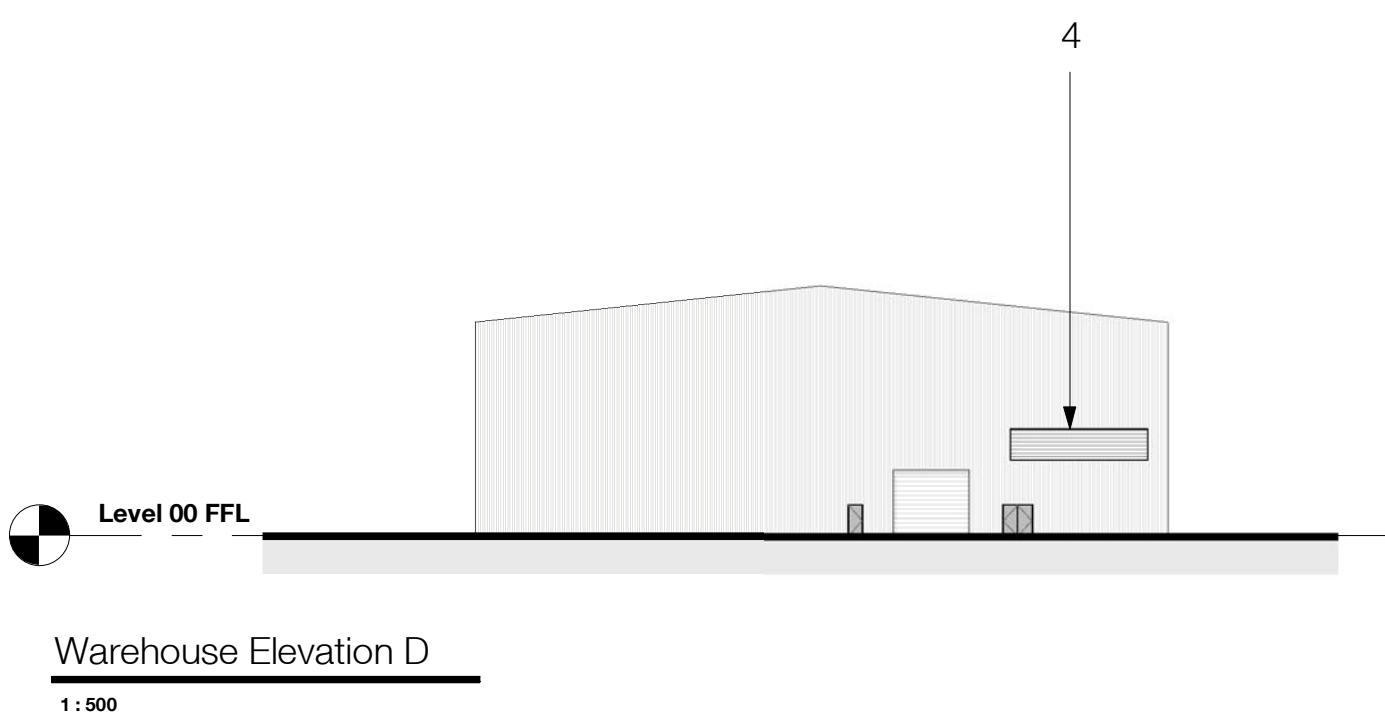
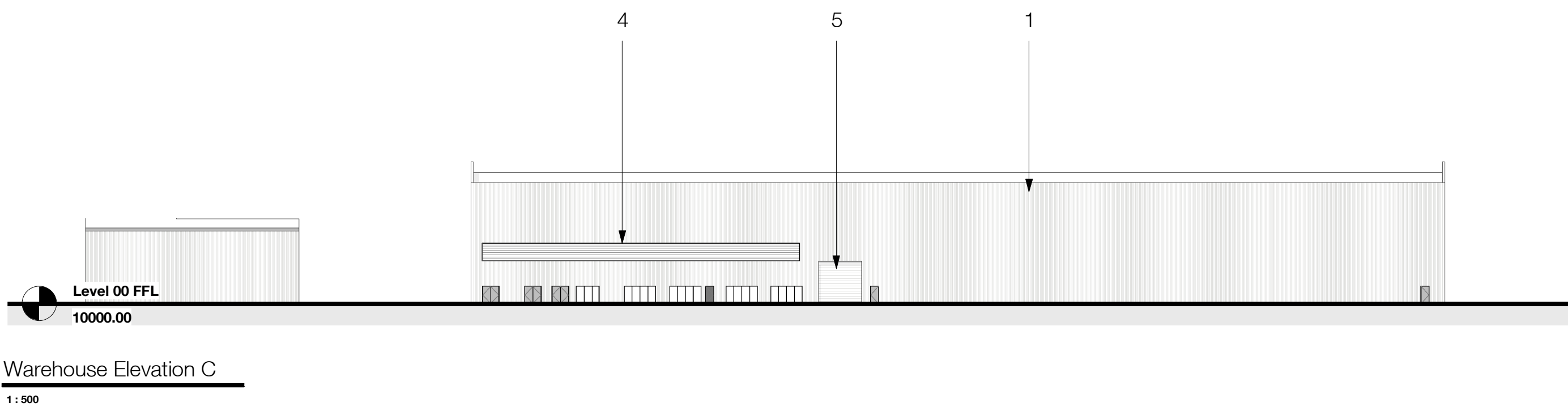
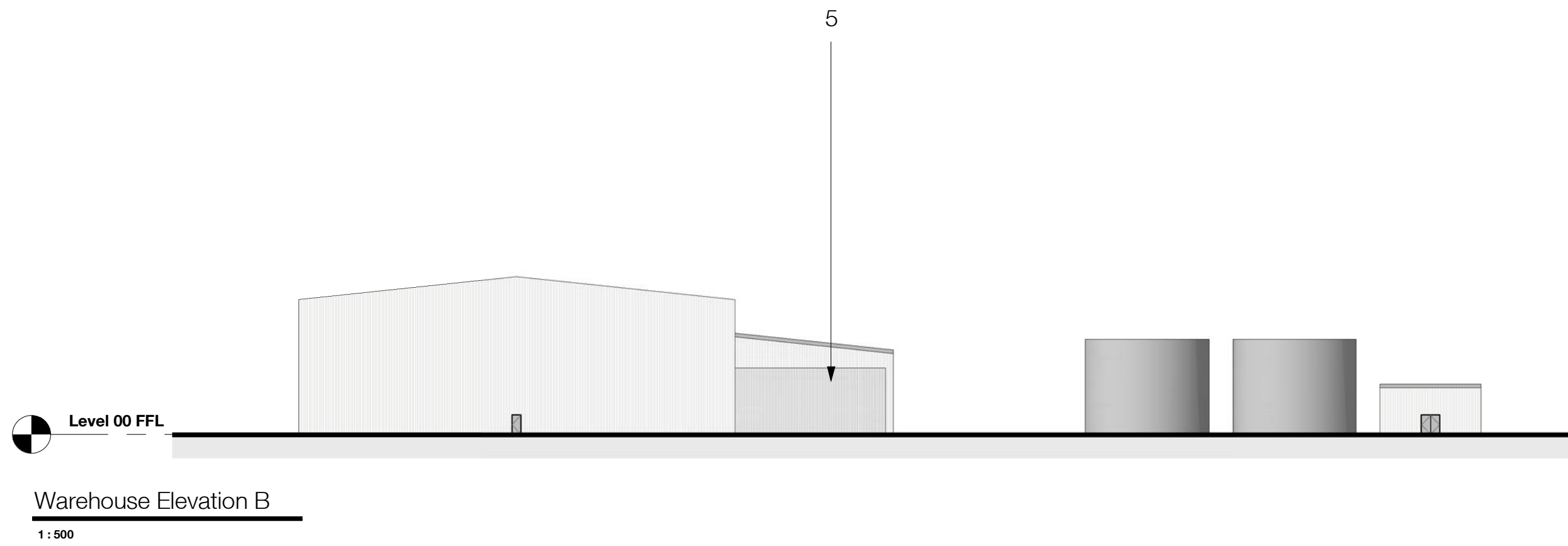
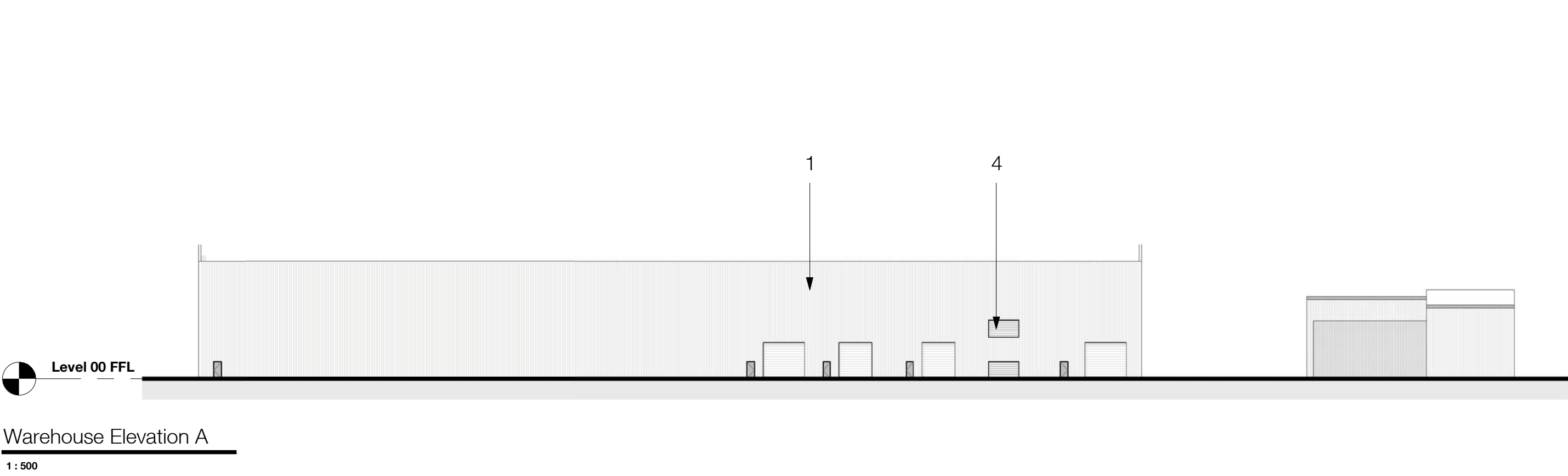
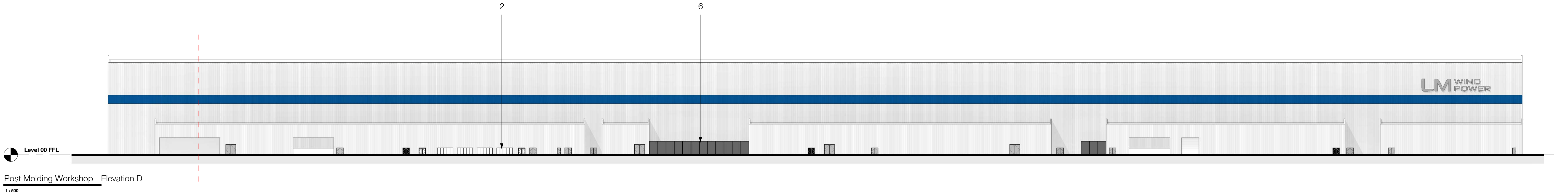
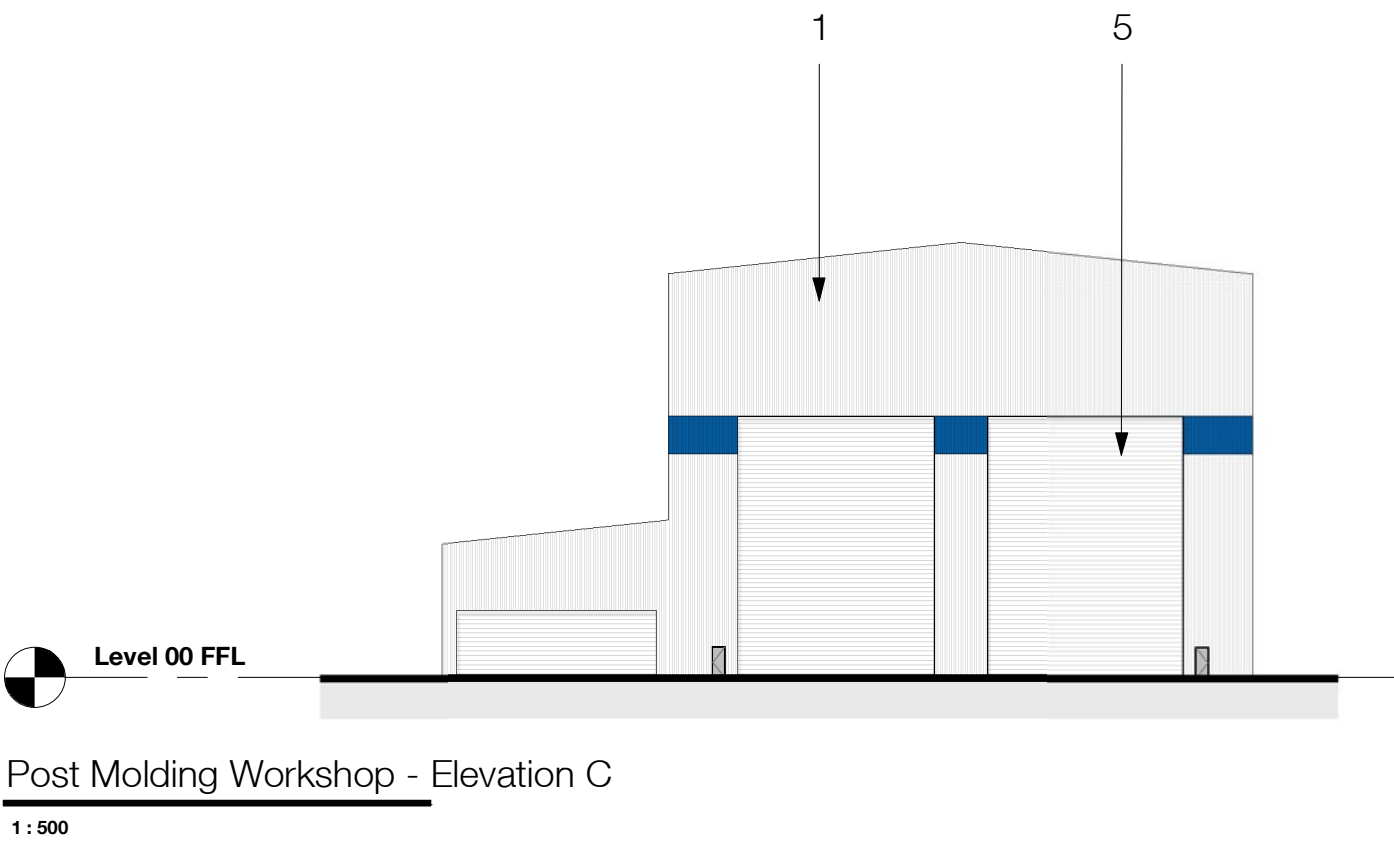
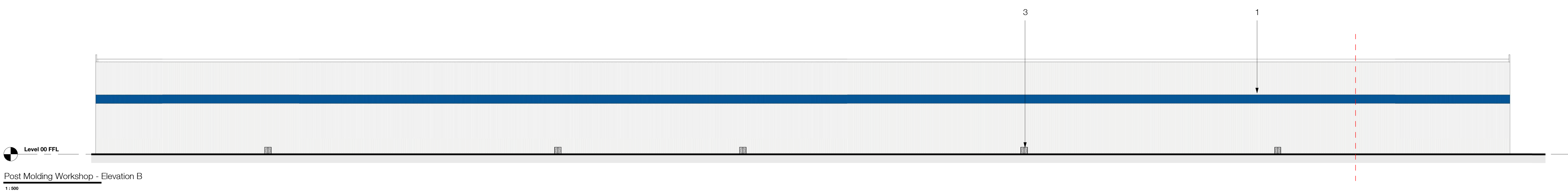
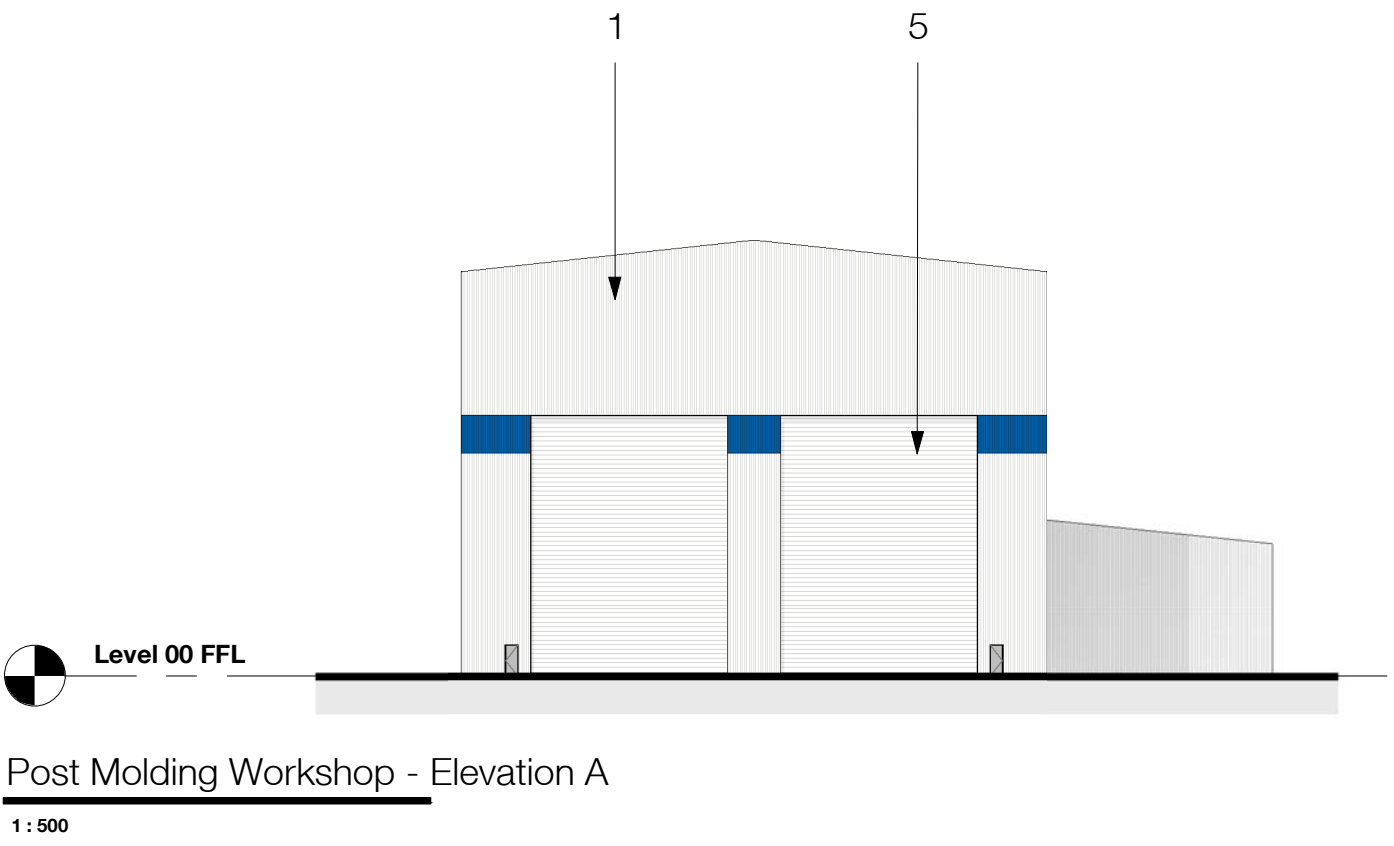
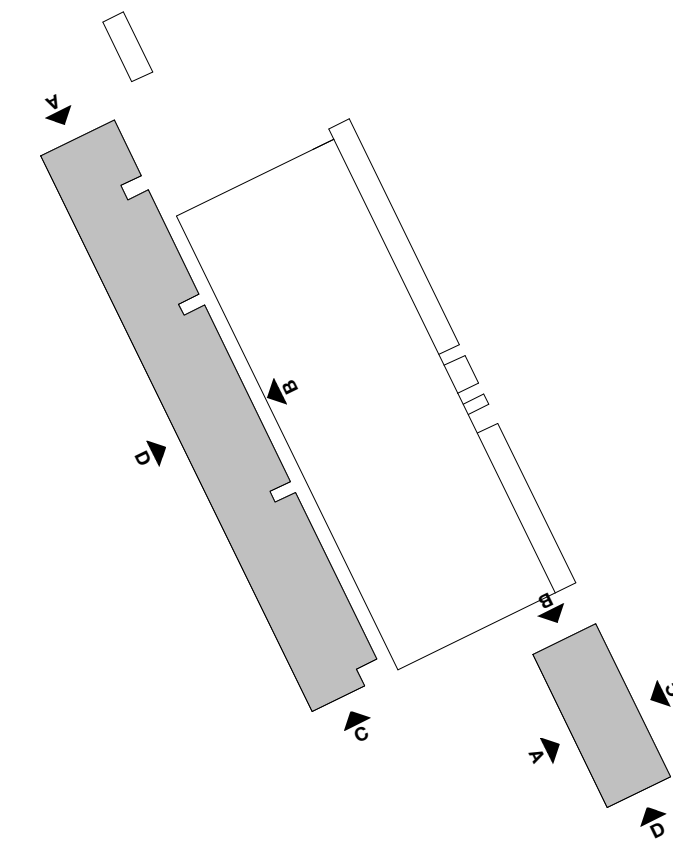


Perspective view of the Post Molding Workshop, Blade Workshop and Warehouse

The use of this data by the recipient acts as an agreement of the following statements.
Do not use this data if you do not agree with any of the following statements:
All drawings are based upon site information supplied by third parties and as such their accuracy cannot be guaranteed. All features are approximate and subject to verification by a qualified topographical survey. Issuing services implies and confirmation of the legal boundaries.
The controlled version of this drawing should be viewed in DWG or PDF format not DWG or other formats. All parts of this drawing must be made in full colour.
When this drawing has been based upon Ordnance Survey data, it has been reproduced under the terms of Order Licence No. 10000144. Reproduction of this drawing in whole or in part is prohibited without the prior permission of Ordnance Survey.
Do not scale the drawings. Use found dimensions in all cases. Check all dimensions on site. Report any discrepancies in writing to Ryder before proceeding.



Key Plan



NOTES:

- 1 Composite Cladding
- 2 Aluminium Window System
- 3 Aluminium Doorsets
- 4 Aluminium Louvres
- 5 Megadoor System
- 6 Palisade Fencing

| P1 | First Issue | JAW | JRE | 26/05/2021 |
|-------------------|---|-------------|---------|------------|
| Rev. | Description | Drawn | Checked | Date |
| Amendment | | | | |
| Subsidiary | | | | |
| For Information | | | | |
| Project | LM Wind Power | | | |
| | LM Wind UK Facility | | | |
| | Teesport, United Kingdom | | | |
| Drawing | Post Molding Workshop, Warehouse & Waste Area GA Elevations | | | |
| Drawing No. | Originator | Zone | Level | Type |
| Project ID | LMW | RYD | 00 | ZZ |
| Ryder Project No. | 10548-00 | Scale of A0 | 1:500 | Status |
| | | | S2 | Revision |
| | | | | P1 |