

TS10 1RT

Advice : HSL-220420090646-321 DO NOT ADVISE AGAINST

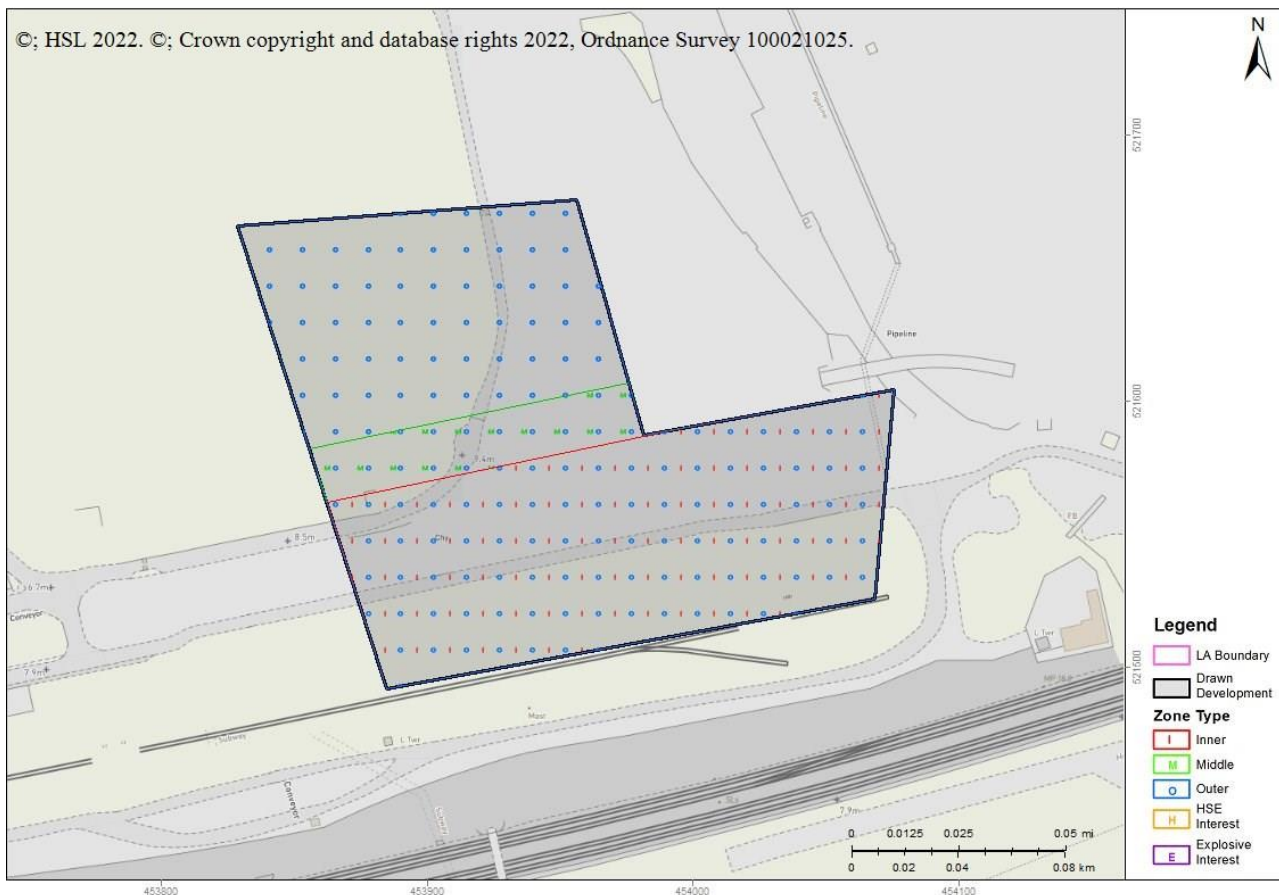
Your Ref: R/2022/0355/RMM

Development Name: SeAH WIND LTD LAND AT SOUTH BANK OFF TEES DOCK ROAD SOUTH BANK
Comments: ERECTION OF INDUSTRIAL FACILITY (USE CLASS B2/B8), ASSOCIATED STRUCTURES, HARDSTANDING AND LANDSCAPING WORKS

Land Use Planning Consultation with Health and Safety Executive [Town and Country Planning (Development Management Procedure) (England) Order 2015, Town and Country Planning (Development Management Procedure) (Wales) Order 2012, or Town and Country Planning (Development Management Procedure) (Scotland) Regulations 2013]

The Health and Safety Executive (HSE) is a statutory consultee for certain developments within the Consultation Distance of Major Hazard Sites/ pipelines. This consultation, which is for such a development and is within at least one Consultation Distance, has been considered using HSE's planning advice web app, based on the details input on behalf of Redcar and Cleveland (B).

HSE's Advice: Do Not Advise Against, consequently, HSE does not advise, on safety grounds, against the granting of planning permission in this case.



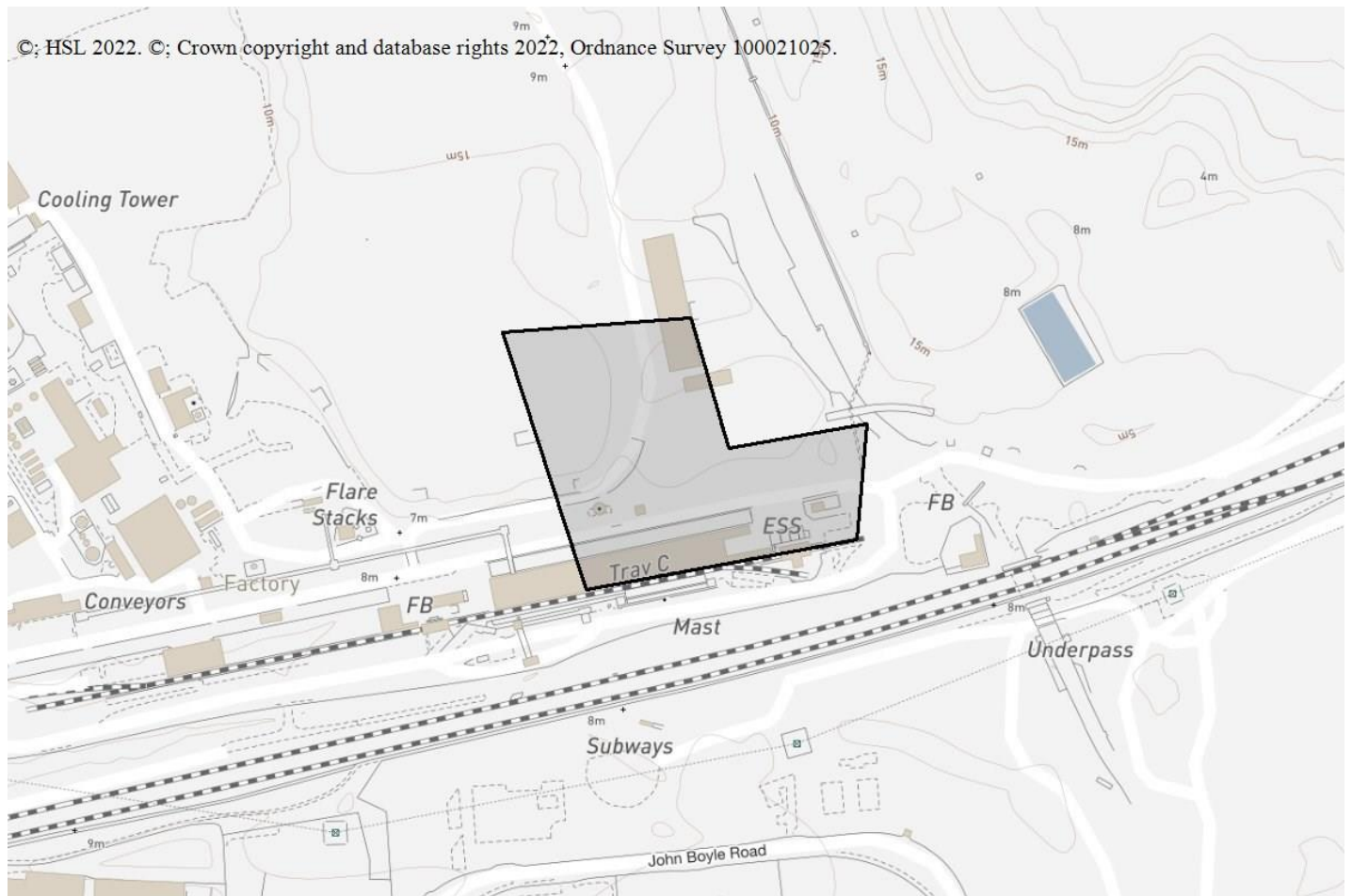
Breakdown:

Workplaces : Do Not Advise Against

Is it a workplace specifically for people with disabilities, e.g. sheltered workshops? No

Are there 100 or more occupants in any individual workplace building (that lie partly or wholly within a consultation distance)? No

Are there 3 or more occupied storeys in any workplace building (that lie partly or wholly within a consultation distance)? No



This advice report has been generated using information supplied by Lynne Aspery at Redcar and Cleveland (B) on 20 April 2022.

Note that any changes in the information concerning this development would require it to be re-submitted.