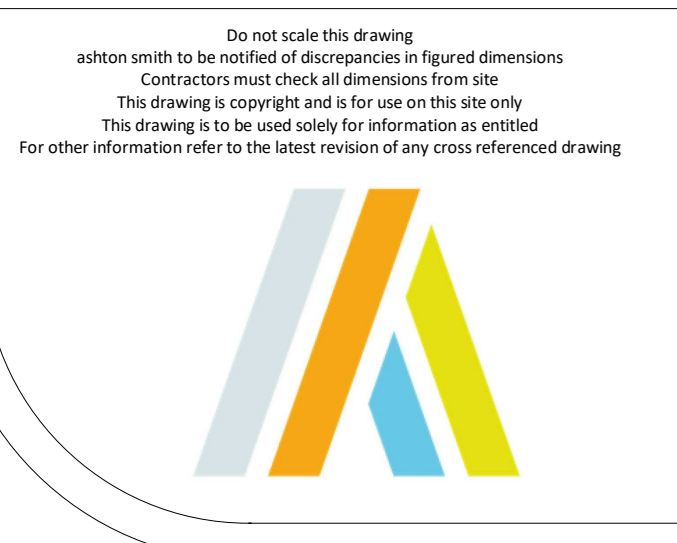


**1 Main Facility Ground Floor Plan**  
1 : 750



**LOCATION PLAN:**

**NOTES:**

- TRANSVERSE BRACES REMOVAL AREA
- COLUMN REMOVAL AREA

REV	DATE	DESCRIPTION	DRAWN BY	CHECKED BY
P1	24/03/22	View files amended to suit correct building name	JVS	RB
P2	24/03/22	First Issue	JVS	RB

<b>PROJECT TITLE</b> SeAH Monopile Facility			
<b>DRAWING TITLE</b> Proposed Main Facility Building Floor Plan			
<b>STATUS</b> Planning			
<b>DATE</b> 25/03/22	<b>DATE</b> 25/03/22	<b>DATE</b> 25/03/22	<b>DATE</b> 25/03/22
<b>SCALE</b> As indicated	<b>SCALE</b> As indicated	<b>SCALE</b> As indicated	<b>SCALE</b> As indicated
<b>REVISION</b> A0	<b>REVISION</b> S0	<b>REVISION</b> P2	<b>REVISION</b> P2
<b>DRAWING NO.</b> SEAH-ASA-00-MF.GF-D-A-0007 (S0-P2)			
<b>REVISED NUMBER</b> SEAH-ASA-22-MF.ZZ-M3-A-0002 (SD-P01)			

**CLIENT**

Ashton Smith, Bakersley House, 3 Victoria Avenue, Harrogate, North Yorkshire, HG2 1EL  
Tel: 01433 328882 Fax: 01433 365104  
www.ashton-smith.co.uk

JOB NO. 22016