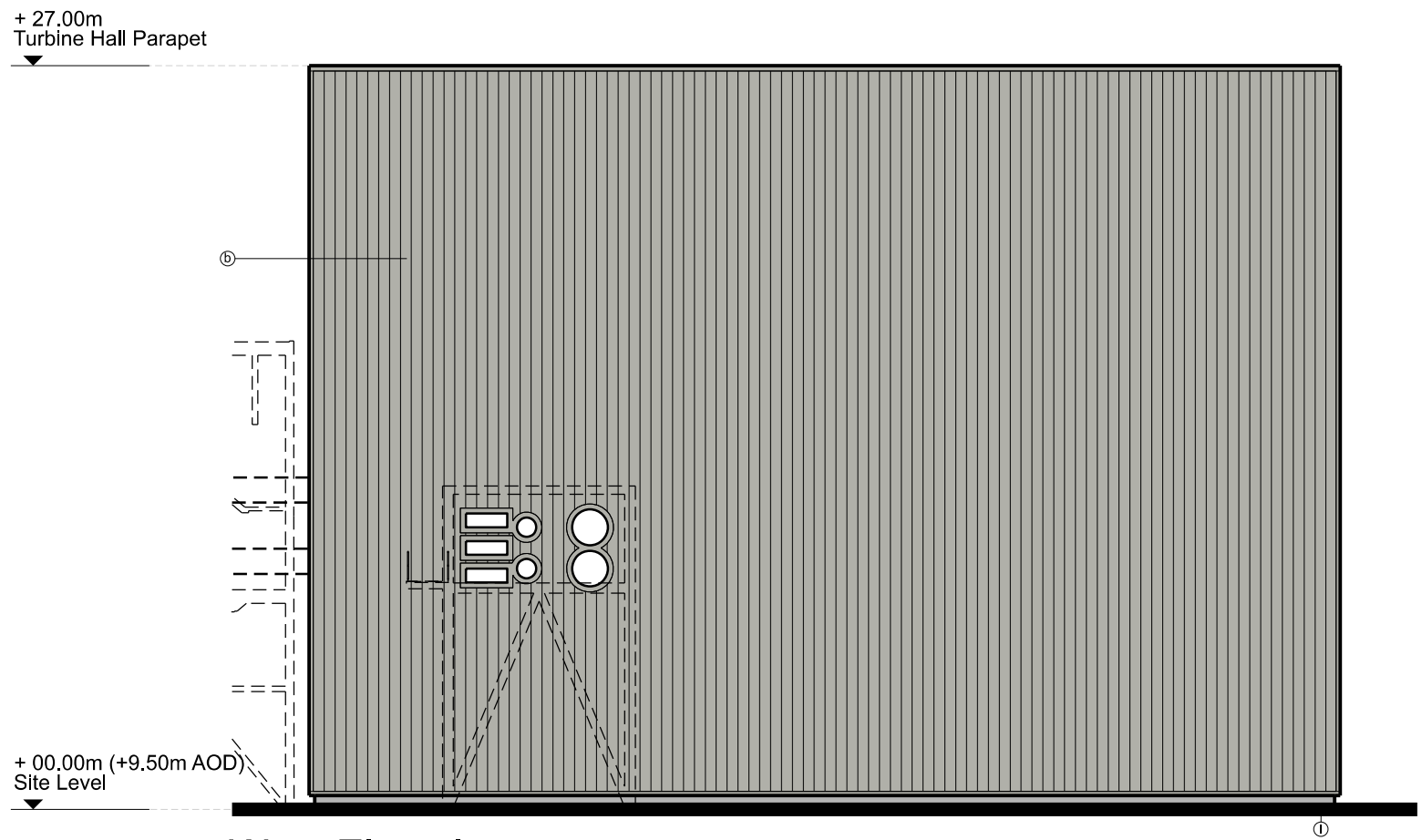
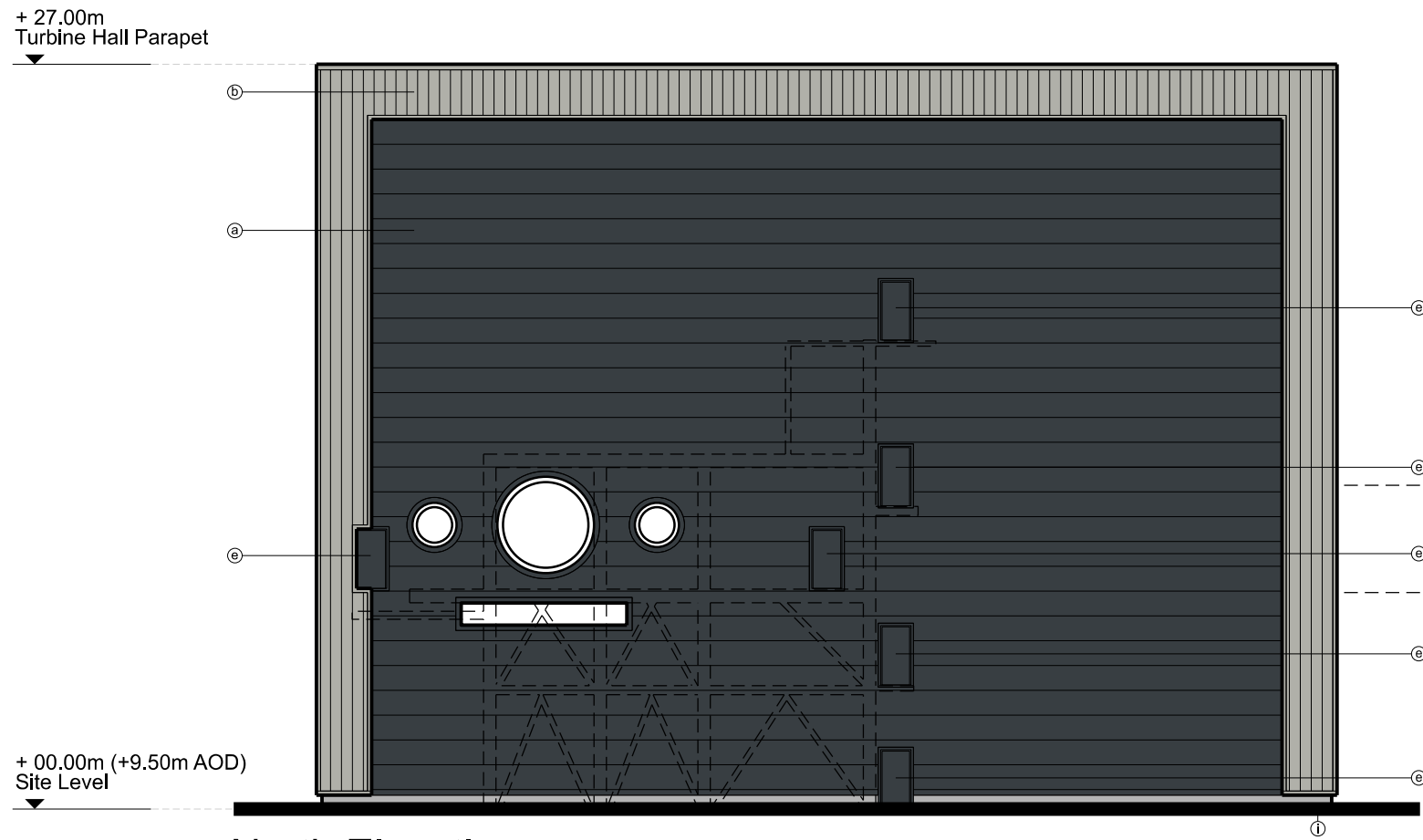


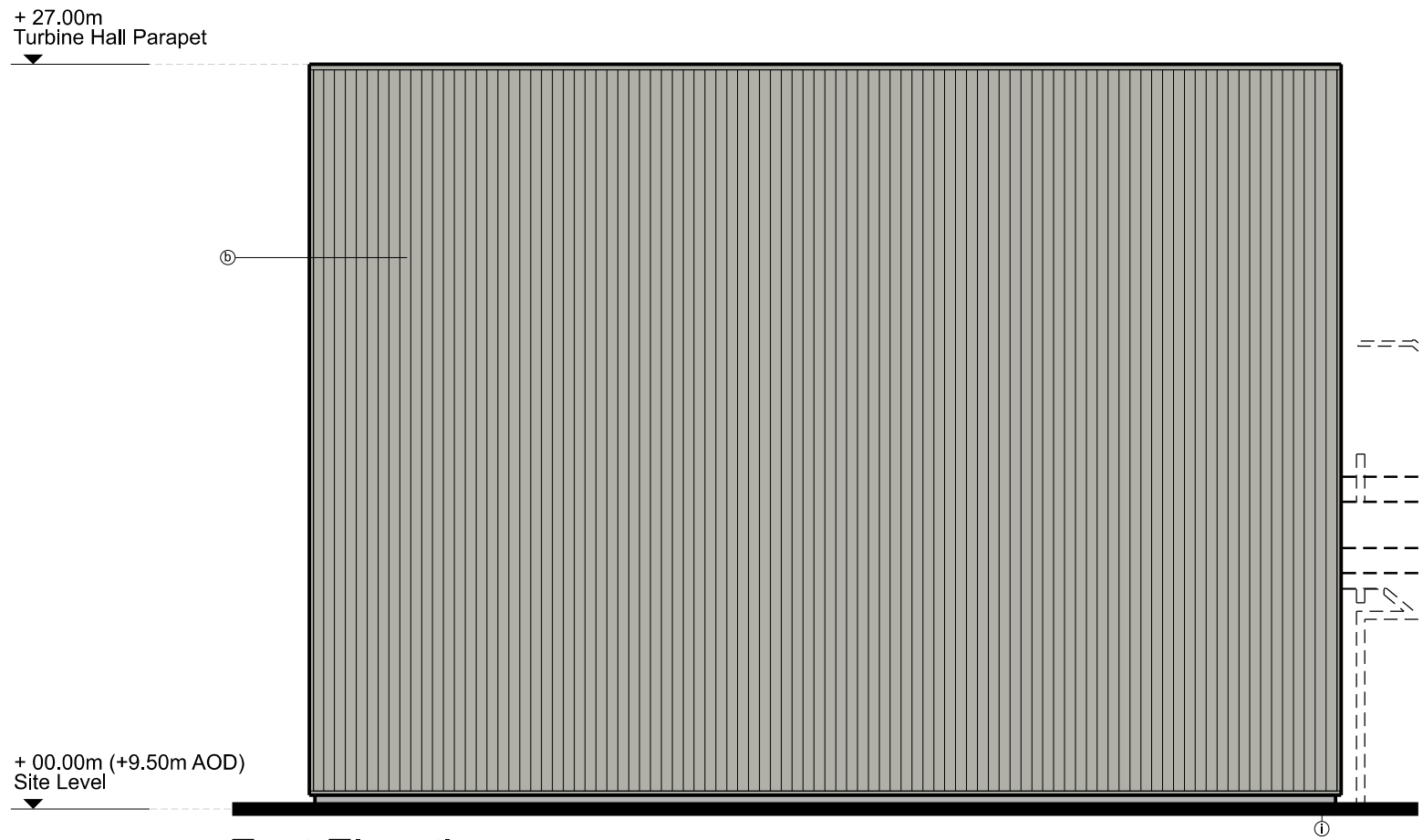
South Elevation



West Elevation



North Elevation



East Elevation

<p>NOTE</p> <p>1. THIS DRAWING IS COPYRIGHT GSDA LTD.</p> <p>2. THE CONTRACTOR MUST NOT SCALE FROM THE DRAWING ALL DIMENSIONS TO BE TAKEN FROM DIMENSION STRINGS.</p> <p>3. WHERE ANY DISCREPANCIES ARE FOUND BETWEEN DIMENSIONS THESE MUST BE BROUGHT TO THE ATTENTION OF THE ARCHITECTS FOR RESOLUTION.</p> <p>4. WHERE DISCREPANCIES EXIST BETWEEN REFERENCE OR ASSEMBLY DRAWINGS &amp; DETAIL DRAWINGS, THE LATTER TAKE PRECEDENCE.</p>		<p>LEGEND All materials, finishes and colours will be as stated or similar approved.</p> <p>③ Composite Metal Insulated Wall Cladding System or similar. Flashing to match. Colour: Anthracite (RAL 7016)</p> <p>④ Kalsip AluPlusPatina standing seam aluminium cladding. Finish: Natural aluminium mill finish, standard</p> <p>⑤ PPC Metal Flashing. Colour: Seren Copper</p> <p>⑥ Metal roller shutter doors. Vision panels where indicated. Colour: To match adjacent cladding</p> <p>⑦ PPC steel personnel / access doors Colour: To match adjacent cladding</p> <p>⑧ PPC Metal louvers and louver doors Colour: To match adjacent cladding</p> <p>⑨ Stack Casing &amp; Ducts Colour: Hamlet (RAL 9002)</p> <p>⑩ Galvanised steel railings and ladders</p> <p>⑪ Concrete bunds, plinths and upstands</p> <p>⑫ Aluminium Window System Finish: Polyester powder coated Colour: Anthracite (RAL 7016) Glazing to be clear</p> <p>⑬ Curtain Walling System Finish: Polyester powder coated. Colour: Anthracite (RAL 7016) Glazing to be a mixture of clear and ceramic back painted glass units 'Merlin Grey' (RAL 180 40 05)</p> <p>⑭ Trapezoidal Roof Cladding / Flashing Colour: Goosewing Grey (RAL 7038)</p> <p>⑮ Flat roofing - single ply membrane system Colour: Merlin Grey RAL 180 40 05</p> <p>⑯ PPC Casing to metal columns Colour: Anthracite (RAL 7016)</p> <p>⑰ PPC Tanks, Silos and bicycle shelter Colour: Anthracite (RAL 7016)</p> <p>⑱ Sheffield type bicycle rack Colour: Anthracite (RAL 7016)</p> <p>⑲ Palatin Weldmesh Anti-Climb Security Fencing and gates Colour: Anthracite (RAL 7016) / Green (RAL 6005)</p> <p>⑳ Palside Security Fencing and gates Colour: Anthracite (RAL 7016)</p> <p>㉑ Steel Louvre Fencing Colour: Anthracite (RAL 7016) / Green (RAL 6005)</p> <p>㉒ Estate Fencing Colour: Black (RAL 9005)</p> <p>㉓ Diamond Knee Rail Fencing Finish: Timber</p> <p>㉔ Steel E-Containers and EDG Housing Colour: Anthracite (RAL 7016)</p> <p>㉕ PV / Photovoltaic Panel</p>		<p>PROJECT</p> <p>Grangetown Energy Recovery Facility</p> <p>DRAWING</p> <p>Turbine Hall Elevations</p> <p>FOR PLANNING</p> <p>1:250@A2 SCALE</p> <p>1425_PL315 DWG. NO.</p> <p>23/03/31 DATE</p> <p>B REVISION</p> <p>21/06/21 Preliminary Issue</p> <p>23/03/31 Issued for Discharge of Reserved Matters</p> <p>21/11/23 Updated</p> <p>22/02/28 Updated</p>		<p>GRP</p> <p>GSDA</p> <p>GARRY STEWART DESIGN ASSOCIATES</p> <p>01 Meadlake Place, Thorpe Lea Rd, Egham, Surrey TW20 8RE, United Kingdom T: 01932 629139</p>	
---	--	--	--	--	--	---	--