

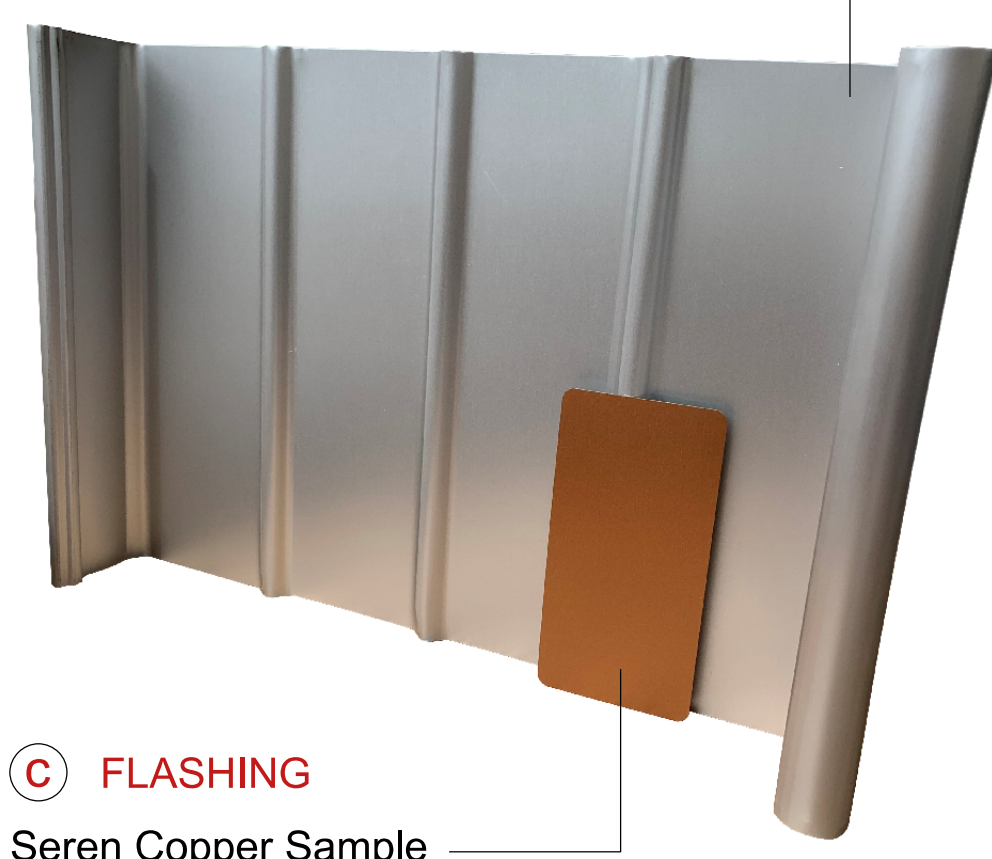
WALL CLADDING

a CLADDING 01

Standing seam aluminium wall cladding - Kalzip 65/500 laid vertically in AluPlusPatina, natural aluminium mill finish, standard



Kalzip Standing Seam Sample

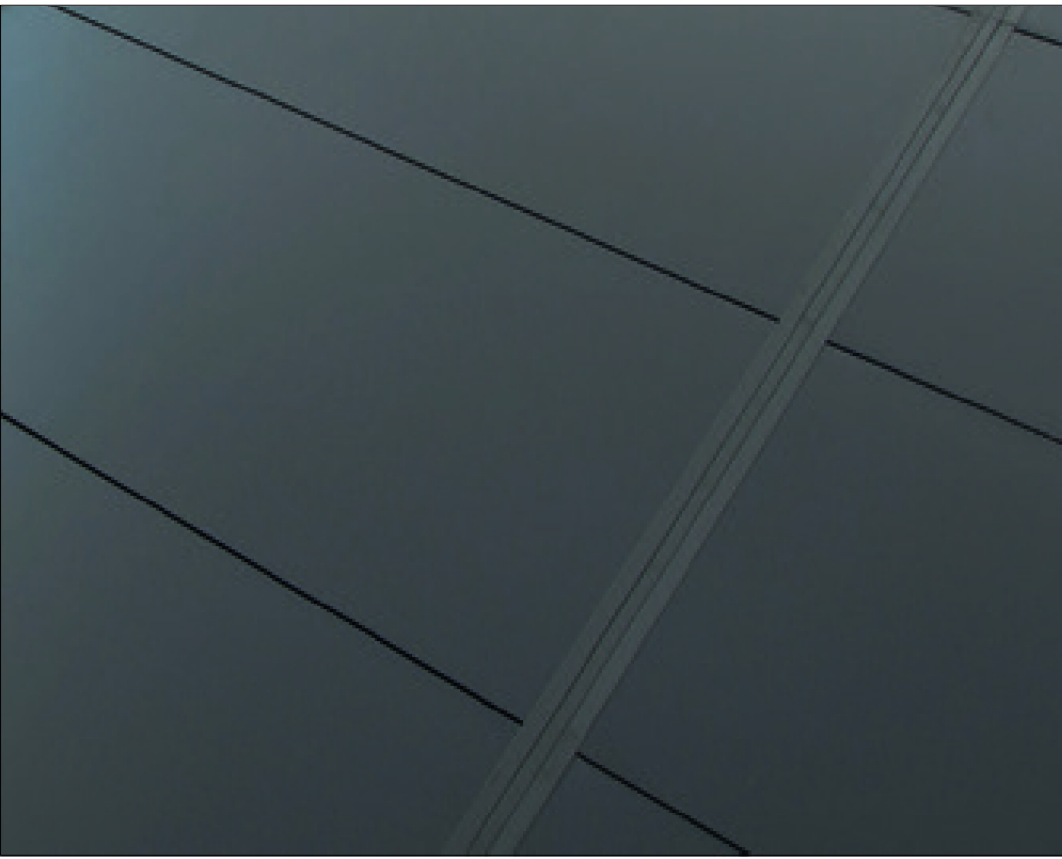


c FLASHING

Seren Copper Sample

b CLADDING 02

Europanel F5 Extra flat composite panel - with Omega flush joint insert. Colour: Anthracite Grey (RAL 7016)



Cladding Joint Detail 3D

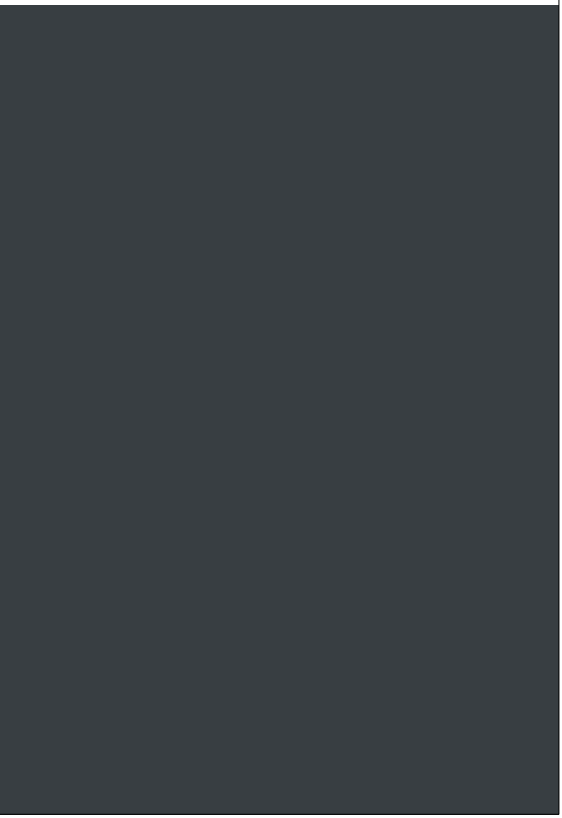


Photo of Composite Cladding Sample



Photo of Cladding Colour

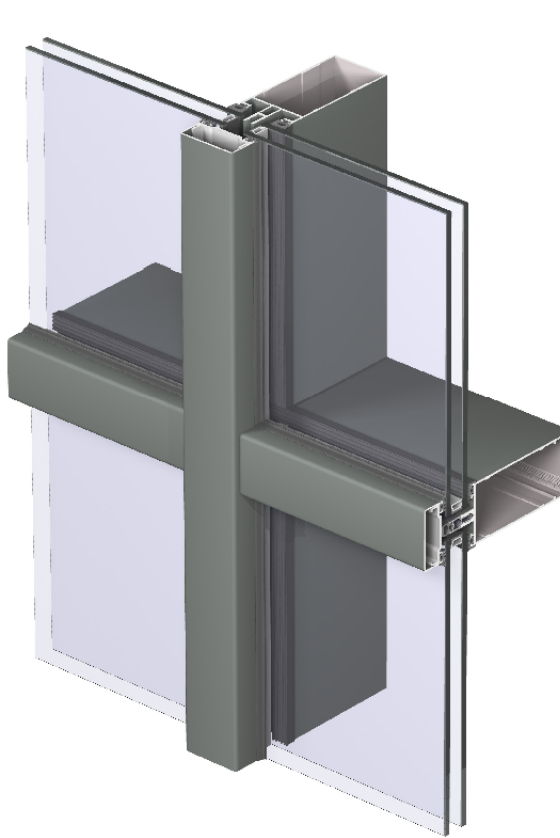
COMPOSITE CLADDING COLOUR
Colourcoat Prisma
'Anthracite'(RAL 7016)



GLAZING

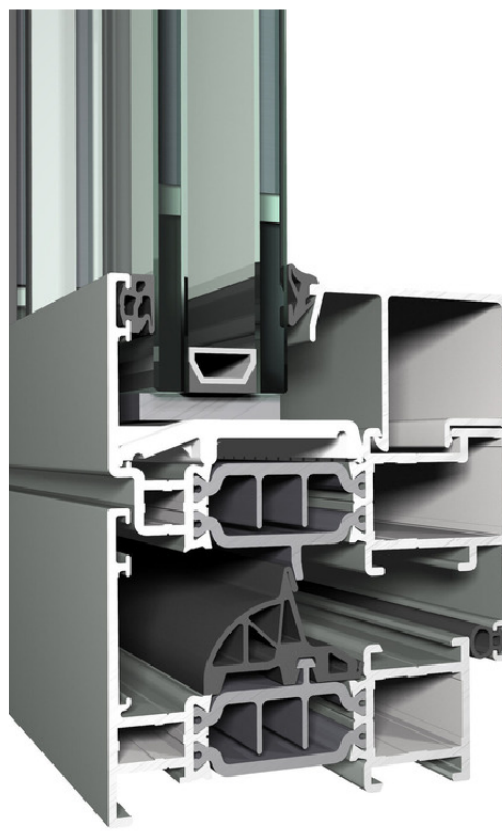
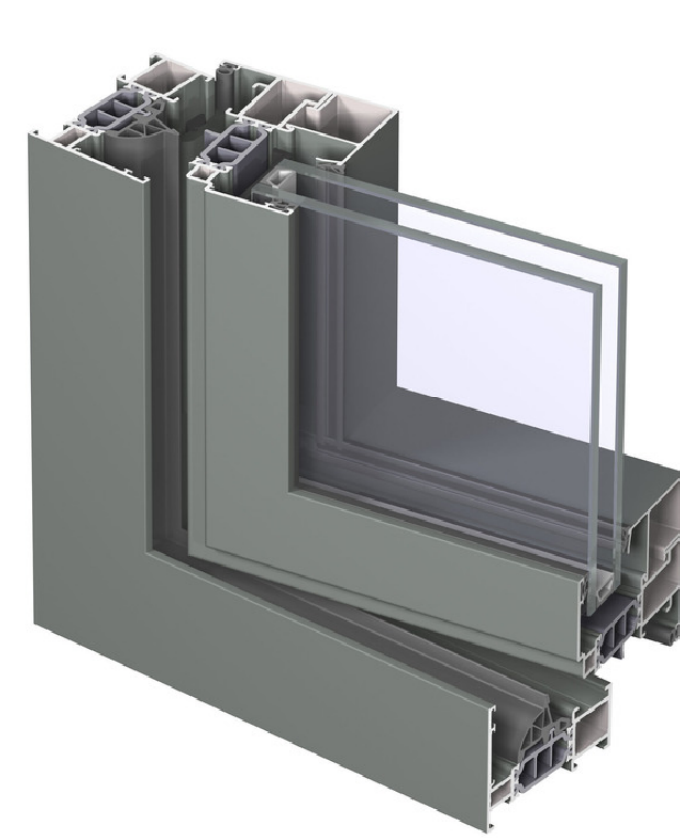
k CURTAIN WALL & DOORS

Curtain Wall - Reynaers CW50 capped with extended with horizontal caps.
Spandrel Panels coated third face with ceramic coating and insulated to rear.
Doors - Reynaers CS77 HID

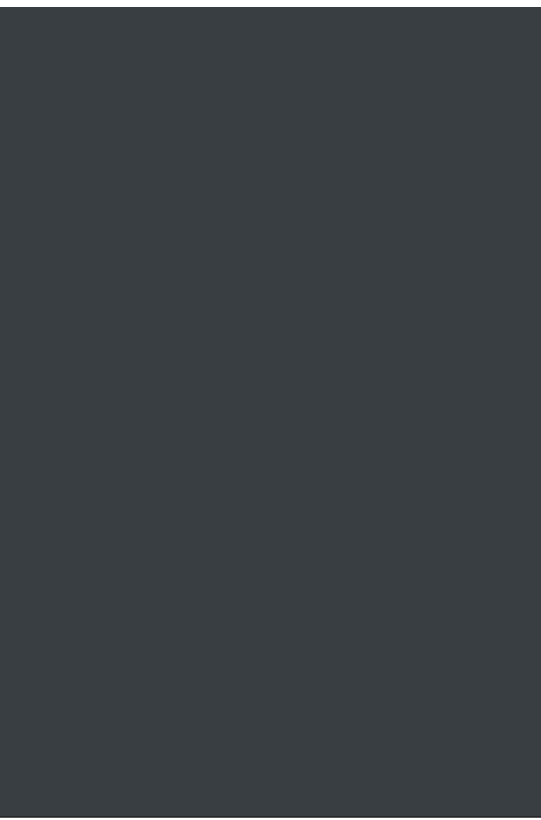


j ALUMINIUM WINDOW FRAMES

Reynaers CS77 Aluminium Windows



CURTAIN WALL AND WINDOW FRAME COLOUR
'Anthracite' (RAL 7016)



SPANDREL COLOUR
Ceramic Back Painted Glass
'Merlin Grey'(RAL 180 40 05)



f LOUVRES

Polyester Powder Coated Steel Double Banked Louvres with GWL RSH-50 Blades with Damper and Silencers as required

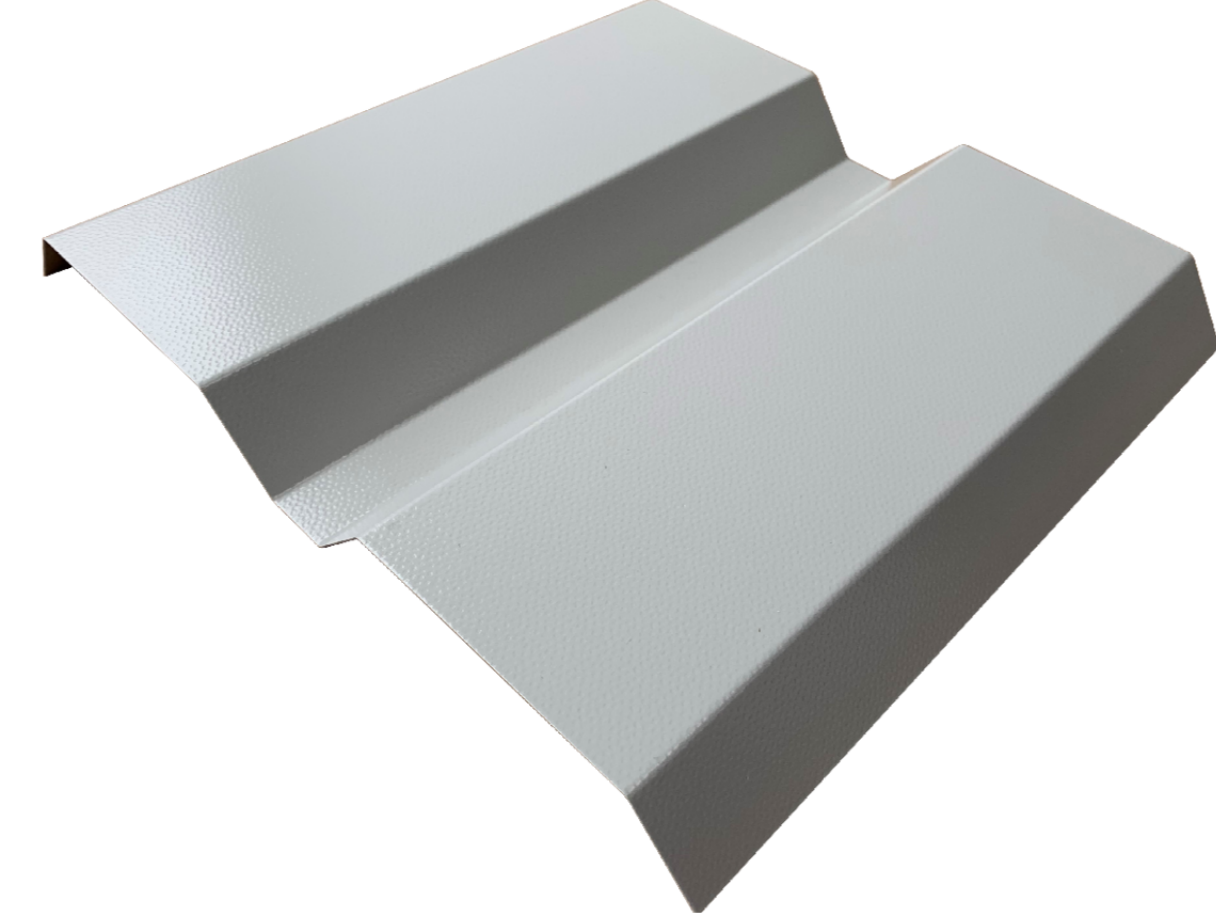
Louvres to match colour of adjacent cladding



ROOFING

m TRAPEZOIDAL ROOF CLADDING

Trapezoidal steel built up insulated roof cladding
Colour Goosewing Grey (RAL 7038)

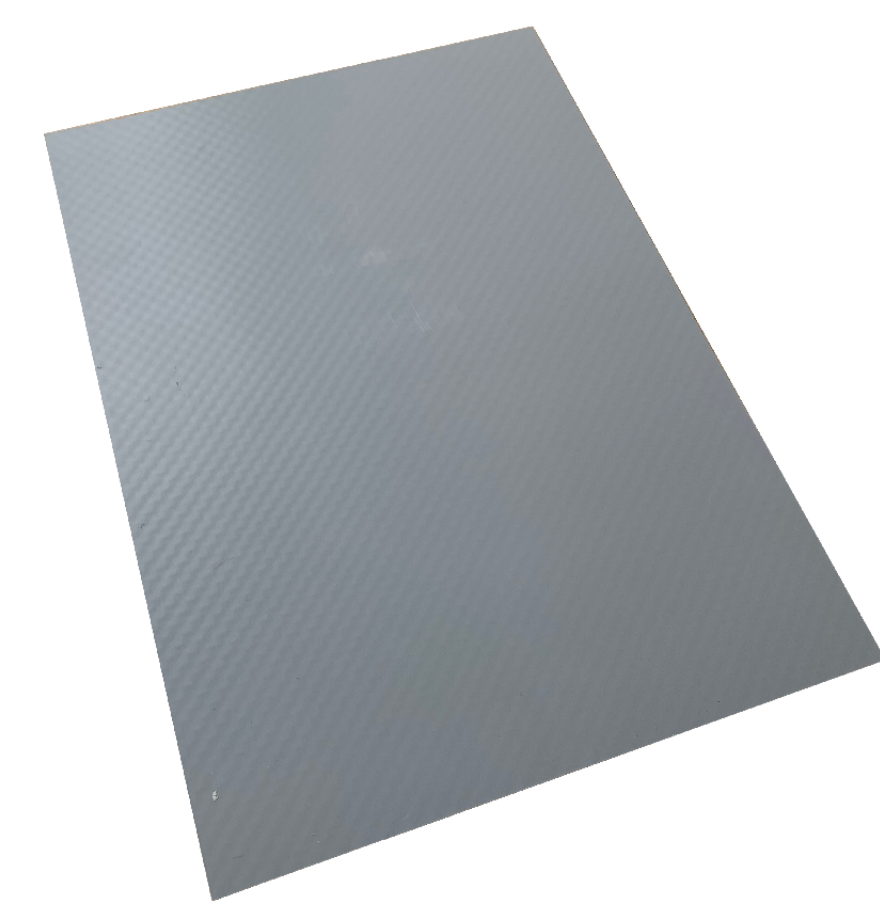


TRAPEZOIDAL ROOF COLOUR
'Anthracite' RAL (7038)



n FLAT ROOFING

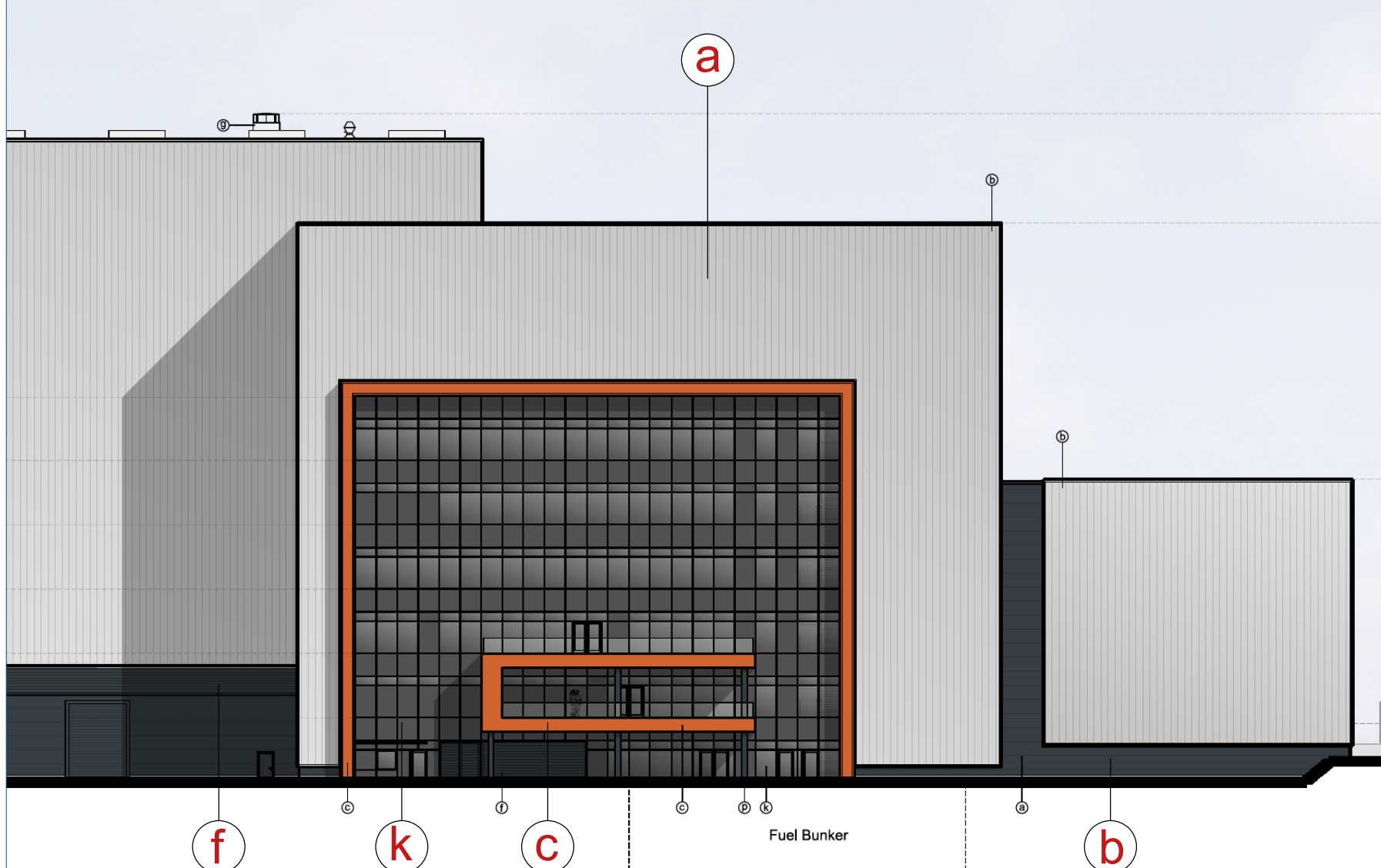
IKO Armourplan P Single Ply Membrane
Colour : Mid Grey (RAL 7046)



FLAT ROOFING COLOUR
'Mid Grey' (RAL 7046)



KEY



NOTE

1. THIS DRAWING IS COPYRIGHT GSDA LTD.
2. THE CONTRACTOR MUST NOT SCALE FROM THE DRAWING ALL DIMENSIONS TO BE TAKEN FROM DIMENSION STRINGS.
3. WHERE ANY DISCREPANCIES ARE FOUND BETWEEN DIMENSIONS THESE MUST BE BROUGHT TO THE ATTENTION OF THE ARCHITECTS FOR RESOLUTION.
4. WHERE DISCREPANCIES EXIST BETWEEN REFERENCE OR ASSEMBLY DRAWINGS & DETAIL DRAWINGS, THE LATTER TAKE PREFERENCE.

LEGEND All materials, finishes and colours will be as stated or similar approved.

- 8 Composite Metal Insulated Wall Cladding System or similar. Flashing to match. Colour: Anthracite (RAL 7016)
- 5 Kalzip AluPlusPatina standing seam aluminium cladding. Finish: Natural aluminium mill finish, standard
- 6 PPC Metal Flashing. Colour: Seren Copper
- 1 Metal roller shutter doors. Vision panels where indicated. Colour: To match adjacent cladding
- 2 PPC steel personnel / access doors Colour: To match adjacent cladding
- 1 PPC Metal louvres and boure doors Colour: To match adjacent cladding
- 2 Stack Casing & Ducts Colour: Hamlet (RAL 9002)
- 1 Galvanised steel railings and ladders
- 1 Concrete bunds, plinths and upstands
- 1 Aluminium Window System Finish: Polyester powder coated Colour: Anthracite (RAL 7016) Glazing to be clear
- 2 Trapezoidal Roof Cladding / Flashing Colour: Goosewing Grey (RAL 7038)
- 1 Flat roofing - single ply membrane system Colour: Merlin Grey RAL 180 40 05
- 2 PPC Casing to metal columns Colour: Anthracite (RAL 7016)
- 3 PPC Tanks, Silos and bicycle shelter Colour: Anthracite (RAL 7016)
- 1 Sheffield type bicycle rack Colour: Anthracite (RAL 7016)
- 5 Polycarbonate wall and roof panels to bicycle shelter Colour: Clear
- 1 Paladin Weldmesh Anti-Climb Security Fencing and gates Colour: Anthracite (RAL 7016) / Green (RAL 6005)
- 1 Pallade Security Fencing and gates Colour: Anthracite (RAL 7016)
- 2 PV / Photovoltaic Panel
- 1 Steel Louvre Fencing Colour: Anthracite (RAL 7016) / Green (RAL 6005)
- 1 Estate Fencing Colour: Black (RAL 9005)
- 1 Diamond Knee Rail Fencing Finish: Timber
- 1 Steel E-Containers and EDG Housing Colour: Anthracite (RAL 7016)
- 2 PV / Photovoltaic Panel

Grangetown Energy Recovery Facility							
Materials and Colours							
FOR PLANNING							
NTS SCALE	23/03/31 DATE	-	21/08/03	Updated	B	23/03/31	Issued for Discharge of Reserved Matters
1425_PL400 DWG. NO.	B REVISION	A	21/11/23	Updated			
		B	22/02/28	Updated			



01 Meadlake Place, Thorpe Lea Rd, Egham, Surrey TW20 8HE, United Kingdom T: 01882 629139